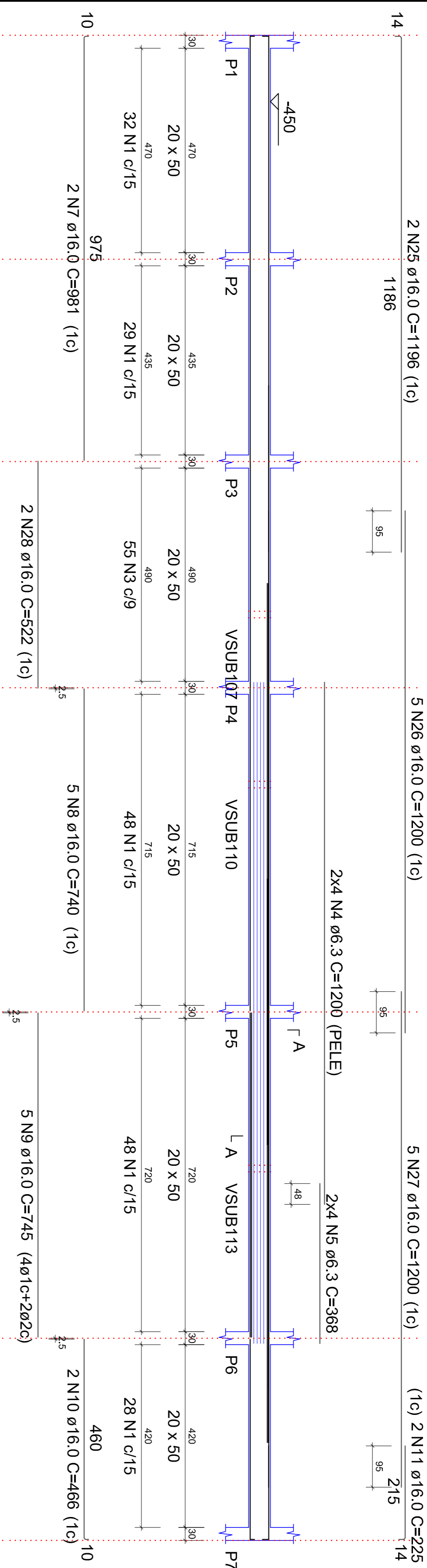


VSUB100
ESC 1:75



RESUMO DO AÇO

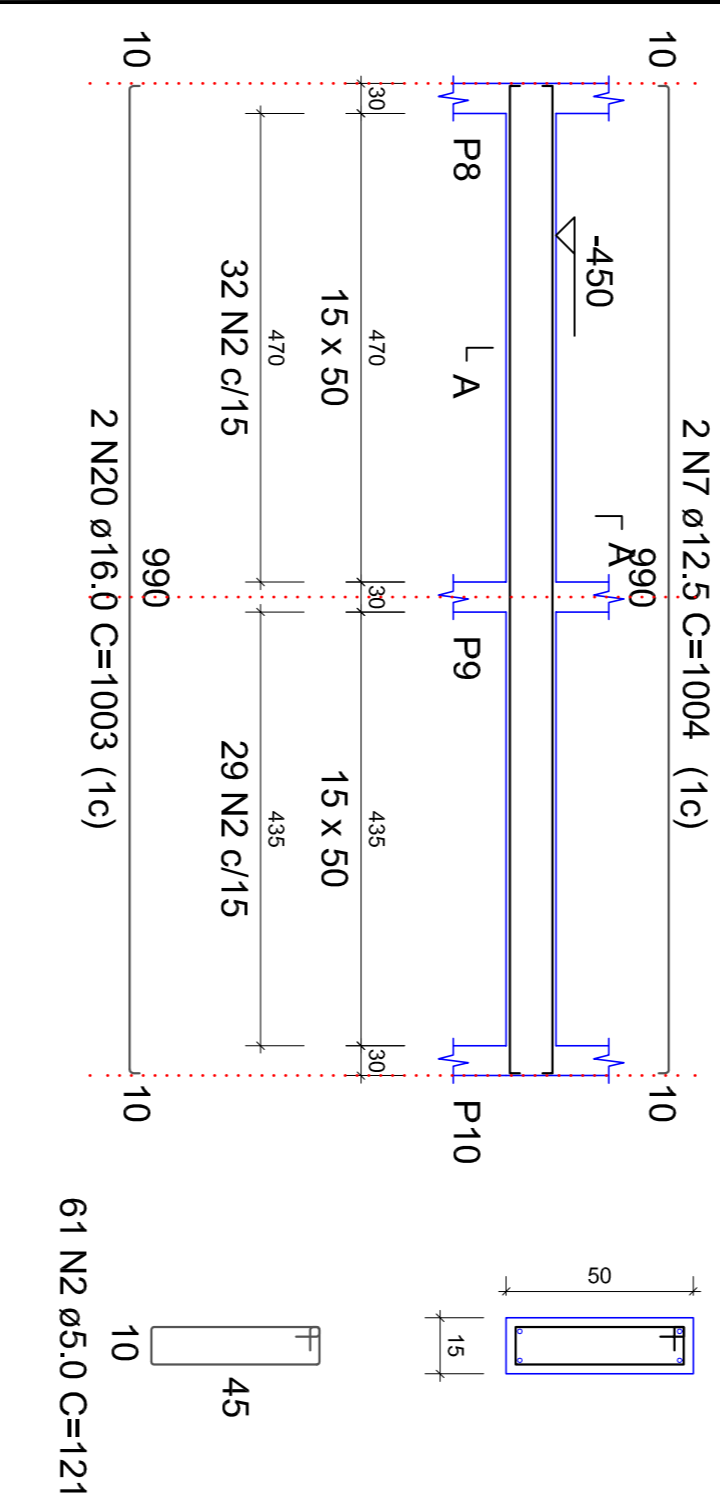
AÇO	DIAM (mm)	C.TOTAL (m)	PESO + 10% (kg)
CA50	6,3	222,4	59,9
CA60	12,5	91,4	96,9
CA60	16,0	442,2	767,7
CA60	5,0	673,1	114,1
PESO TOTAL (kg)			924,4
CA50	114,1		
CA60	114,1		

Volume de concreto (C-30) = 7,95 m³
Área de forma = 110,35 m²

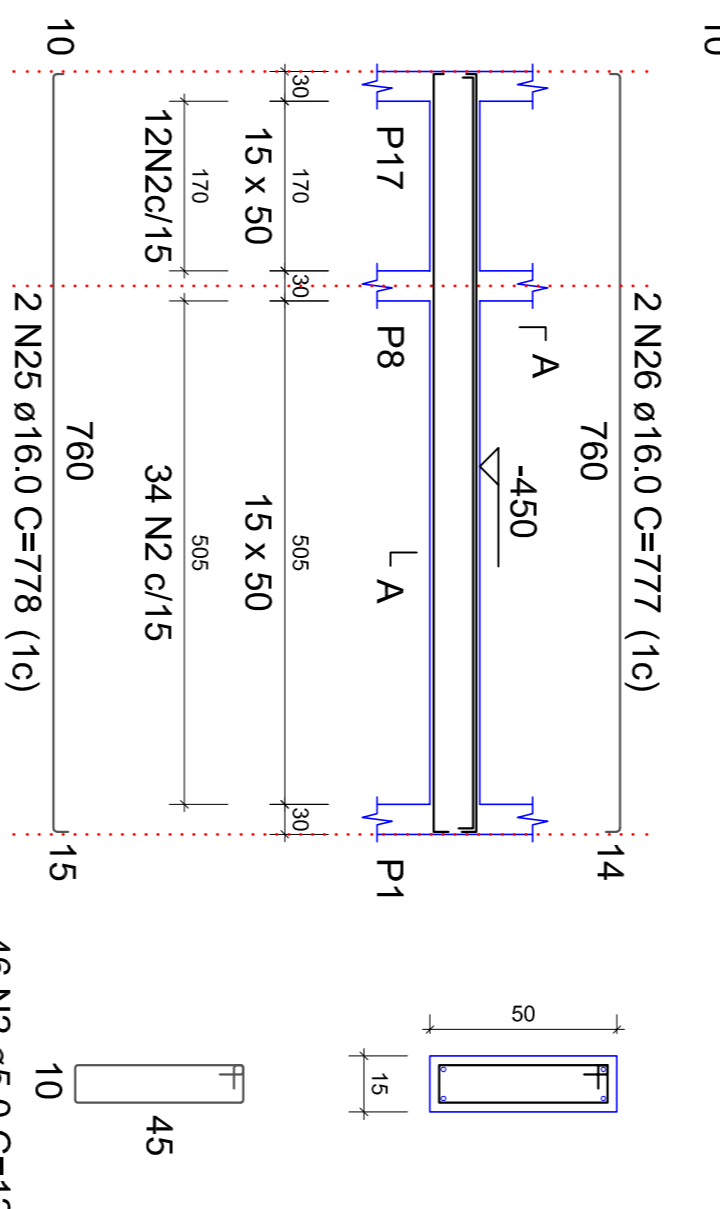
RELAÇÃO DO AÇO

VSUB100	VSUB101	VSUB103	VSUB104	VSUB105	
AÇO	N	DIAM (mm)	QUANT	C.UNIT (cm)	C.TOTAL (cm)
CA60	1	5,0	185	131	24235
CA60	2	5,0	356	121	43076
CA60	3	6,3	55	132	7260
CA60	4	6,3	8	1200	9600
CA60	5	6,3	8	368	2944
CA60	6	6,3	20	122	2440
CA60	7	12,5	2	1004	2008
CA60	8	12,5	2	1197	2394
CA60	9	12,5	2	1200	2400
CA60	10	12,5	2	1170	2340
CA60	11	16,0	2	981	1962
CA60	12	16,0	2	740	1480
CA60	13	16,0	5	745	3725
CA60	14	16,0	5	466	2332
CA60	15	16,0	2	1196	2392
CA60	16	16,0	5	1200	6000
CA60	17	16,0	5	1139	5695
CA60	18	16,0	2	225	450
CA60	19	16,0	2	522	1044
CA60	20	16,0	2	1003	2006
CA60	21	16,0	2	1016	2032
CA60	22	16,0	2	730	1460
CA60	23	16,0	2	775	1550
CA60	24	16,0	2	965	1932
CA60	25	16,0	5	778	3890
CA60	26	16,0	2	777	1554
CA60	27	16,0	1	484	484
CA60	28	16,0	2	848	1696
CA60	29	16,0	2	856	1712

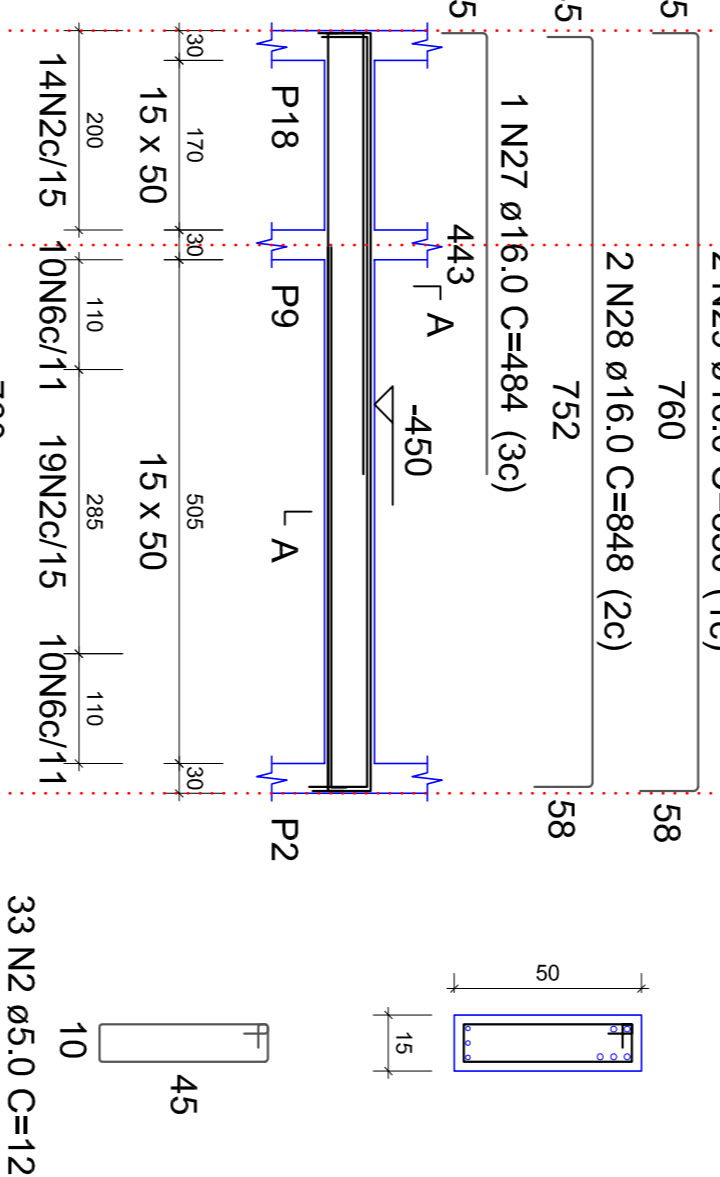
VSUB101
ESC 1:75



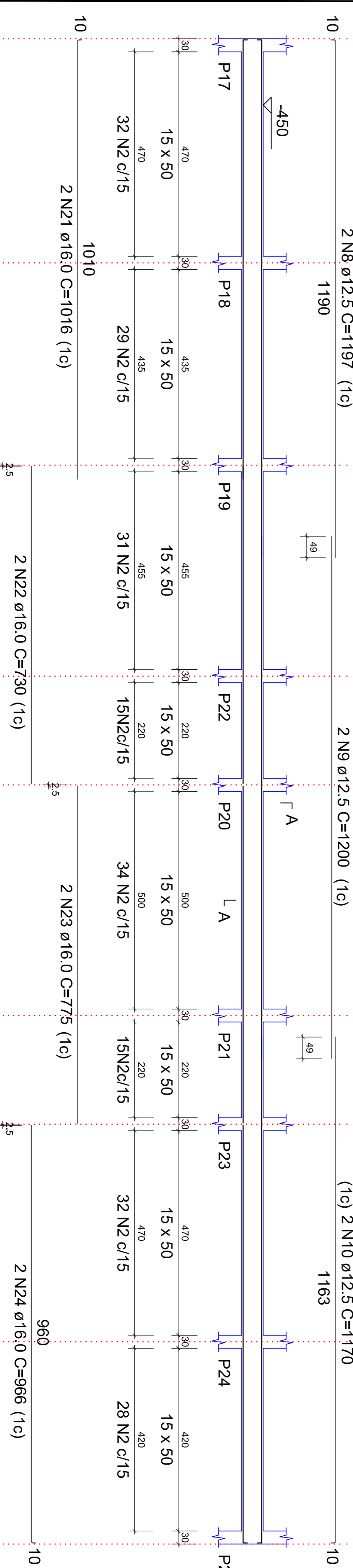
VSUB104
ESC 1:75



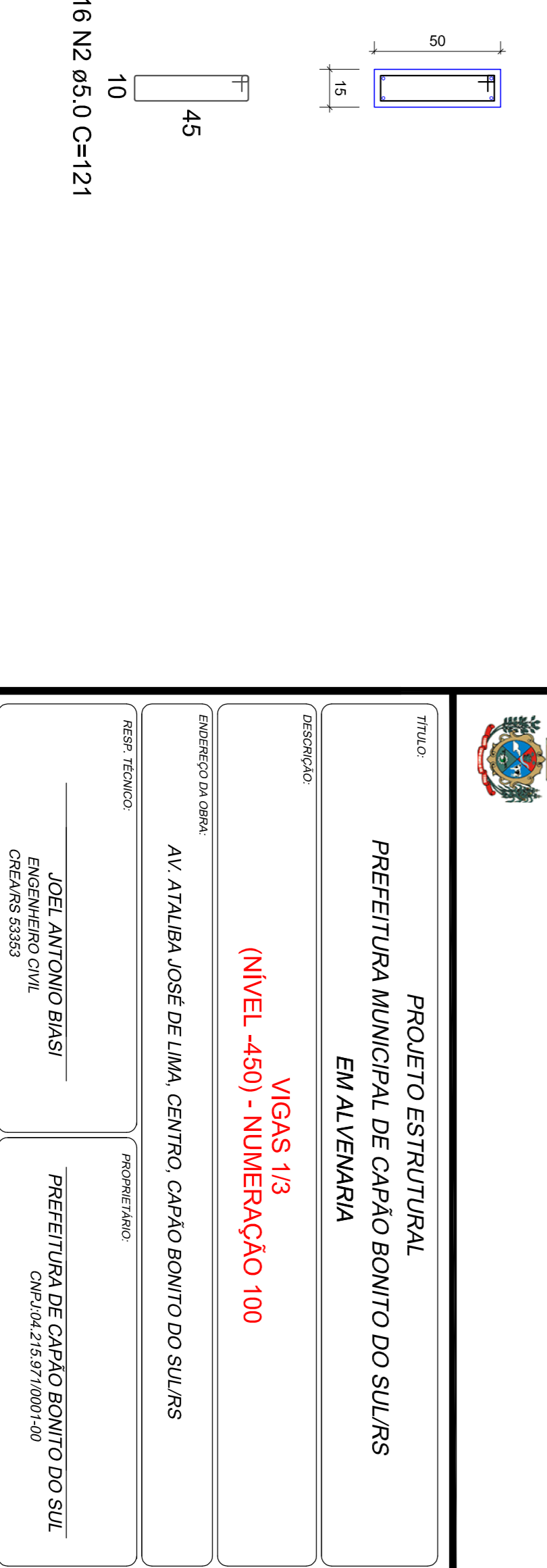
VSUB105
ESC 1:75



VSUB103
ESC 1:75



VSUB103
ESC 1:20



PREFEITURA MUNICIPAL DE CAPÃO BONITO DO SUL
EM ALVENARIA

VIGAS 1/3
(NÍVEL -450) - NUMERAÇÃO 100

PROJETO ESTRUTURAL
PREFEITURA MUNICIPAL DE CAPÃO BONITO DO SUL

RESPOSTA TÉCNICA
RESPOSTA TÉCNICA
AV. ATALIBA JOSÉ DE LIMA, CENTRO, CAPÃO BONITO DO SUL/RS

PROJETADE
JOEL ANTONIO BIASI
ENGENHEIRO CIVIL
CREFERS 53593

PROJETADE
PREFEITURA DE CAPÃO BONITO DO SUL
CNPJ:04.215.971/0001-00

ÁREA TERRENO 3.879,80 m²
ÁREA TOTAL EDIFICAÇÃO 1.213,71 m²

INDICADA
INDICADA

DATA 24/07/2019

05
32